

Receiving an encrypted email from TCLMH

1. Email recipients of the encrypted message should receive a message that looks like this.



SPX Registration Request from Trego County-Lemke Memorial Hospital

Tom Micek has sent you an encrypted message. Before you can receive and view this email you will need to register with a password.

After you have completed the registration, you will be able to view any future encrypted emails using the same password that this sender or other senders from Trego County-Lemke Memorial Hospital might send you in the future.

Depending upon the type of device and/or browser you are using, you may receive a certificate error when clicking on the above link. It is safe to proceed to the site, it is encrypted and authenticated using AES_128_GCM and uses ECDHE_RSA as the key exchange mechanism.

To complete the registration process click [here](#).

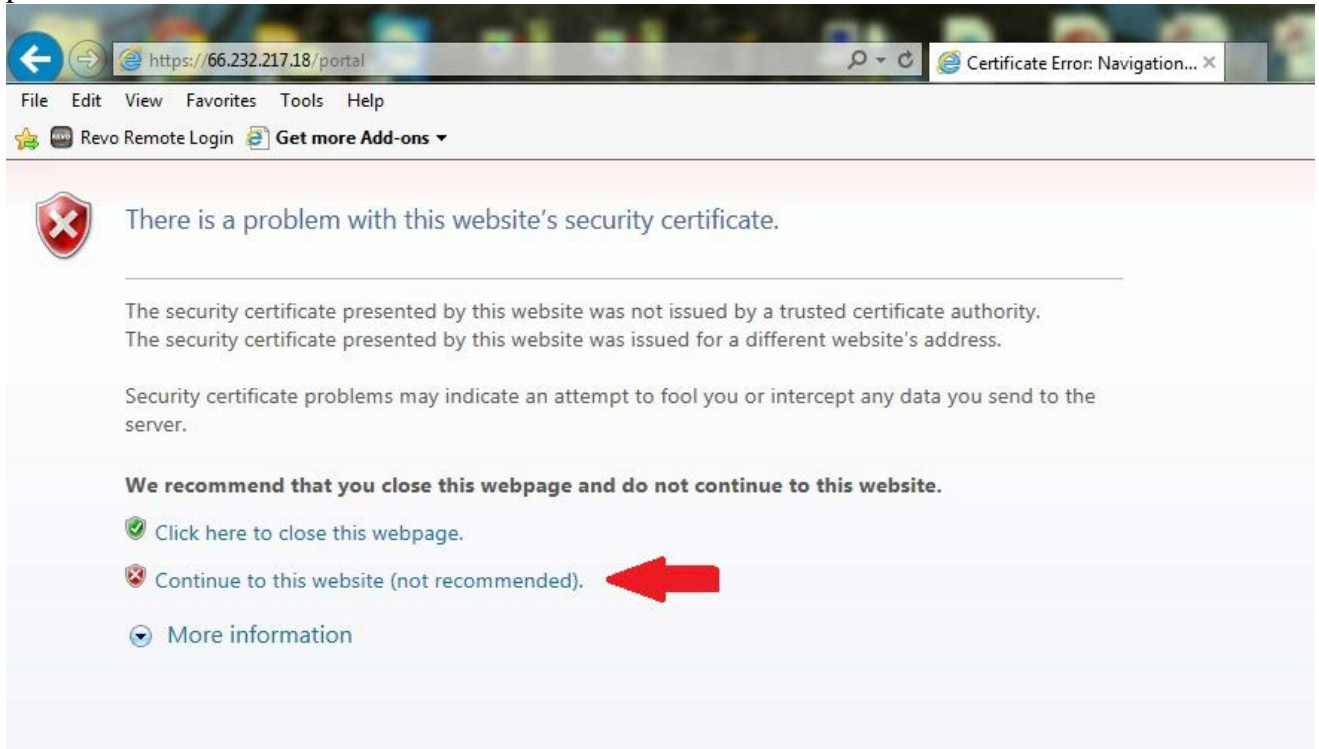
Note: if your mail program does not support active links, you can register by copying and pasting the text below into your internet browser.

<https://trutm1.tclmh.org:10444/register/201504025be0ead355c27d70fe5b6d037a185321d0a0b72b>

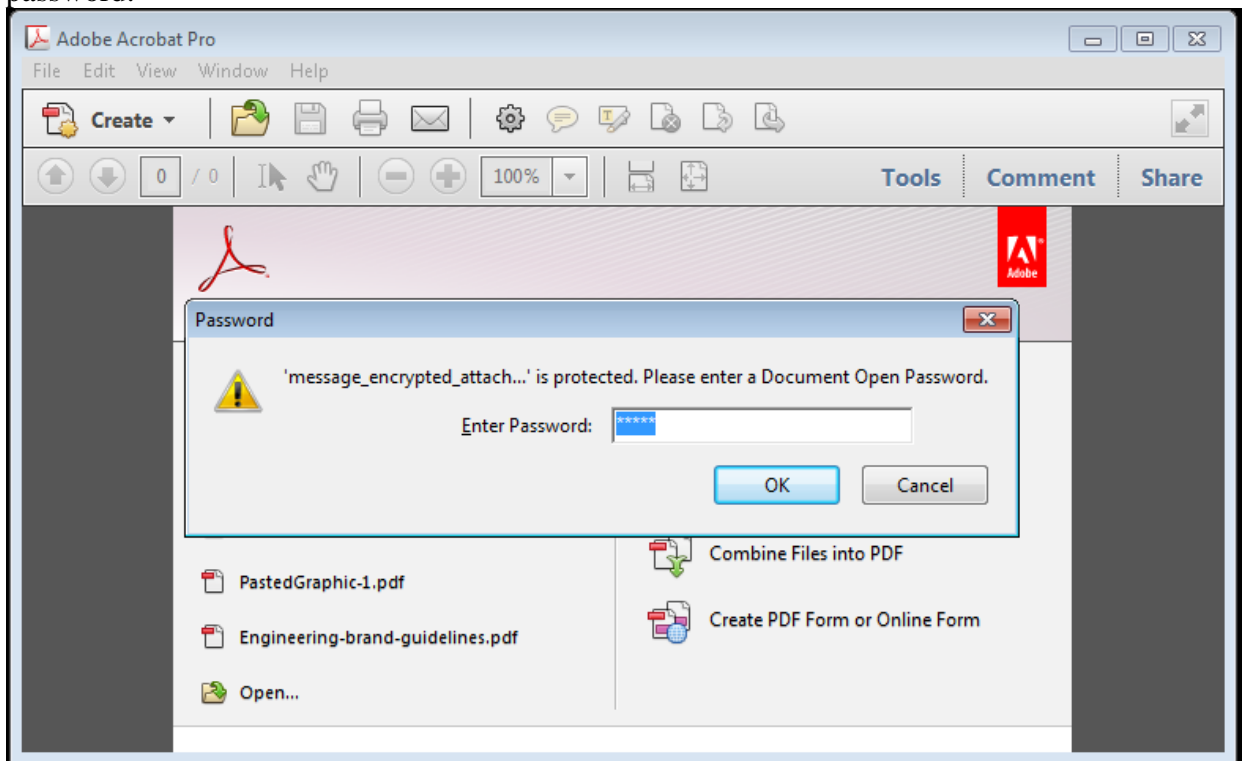
Confidentiality Notice: This e-mail and any files transmitted may contain confidential and privileged information and are intended solely for the use of the individual or entity to which they are addressed. If you are not the intended recipient or the person responsible for delivering the e-mail to the intended recipient, be advised that you have received this e-mail and any such files in error and that any use, dissemination, forwarding, printing or copying of this e-mail and/or any such files is strictly prohibited. If you have received this e-mail in error please immediately notify the sender by reply e-mail or telephone 785-743-2182 and destroy the original message and such files.

2. Users need to set their own passwords through the SPX portal. The encrypted email will be held by the Email Appliance until recipients register a password.
 - a. Note: With both user-registration passwords and sender-communicated passwords, once the password is set, the email user can access any subsequent email messages from that sender, and messages are sent to the recipient(s) immediately.
 - b. After the password has been set, you will receive the original (but encrypted) message at your email account.

3. You may receive a certificate error when registering for a password it is ok, the site is indeed secured with Secured Socket Layer Encryption, click “continue to the website” to proceed to setup the SPX password.

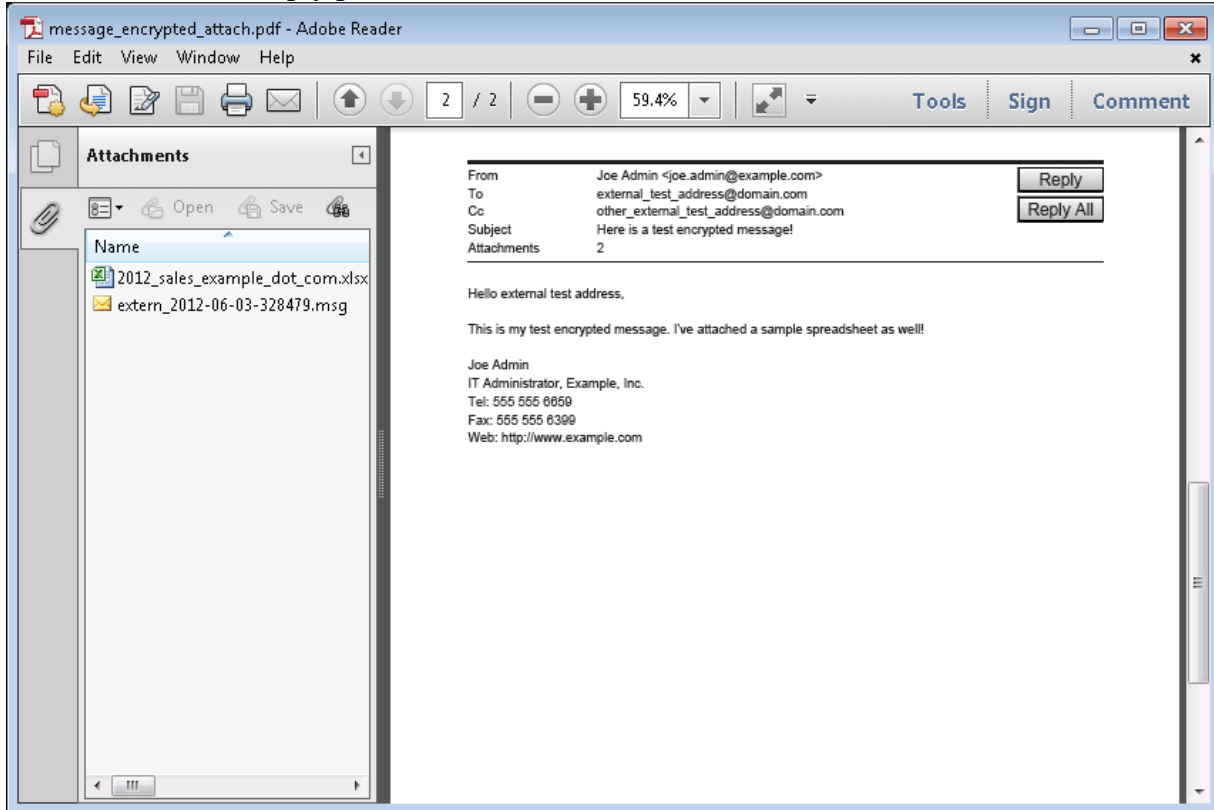


4. Double-clicking the attached PDF opens it in Adobe Reader, where you are prompted to enter the password:



5. After you enter the password, the PDF is decrypted, and the cover page is displayed. You can scroll past the cover page and read the original message, and download any attachments.

6. A Reply button is displayed in the message. This lets the recipient send a secure, encrypted reply to the sender using the SPX portal. Clicking the Reply button opens the recipient's default web browser and launches the secure reply portal.



7. In the secure reply portal, you should compose and send a response to the original email message.

